

Installing PHP 8.1.12 for Windows IIS 10

Download the Non-Threadsafe x64 (64-bit) version of PHP 8.1.12 (or latest version) from here <https://windows.php.net/download#php-8.1>

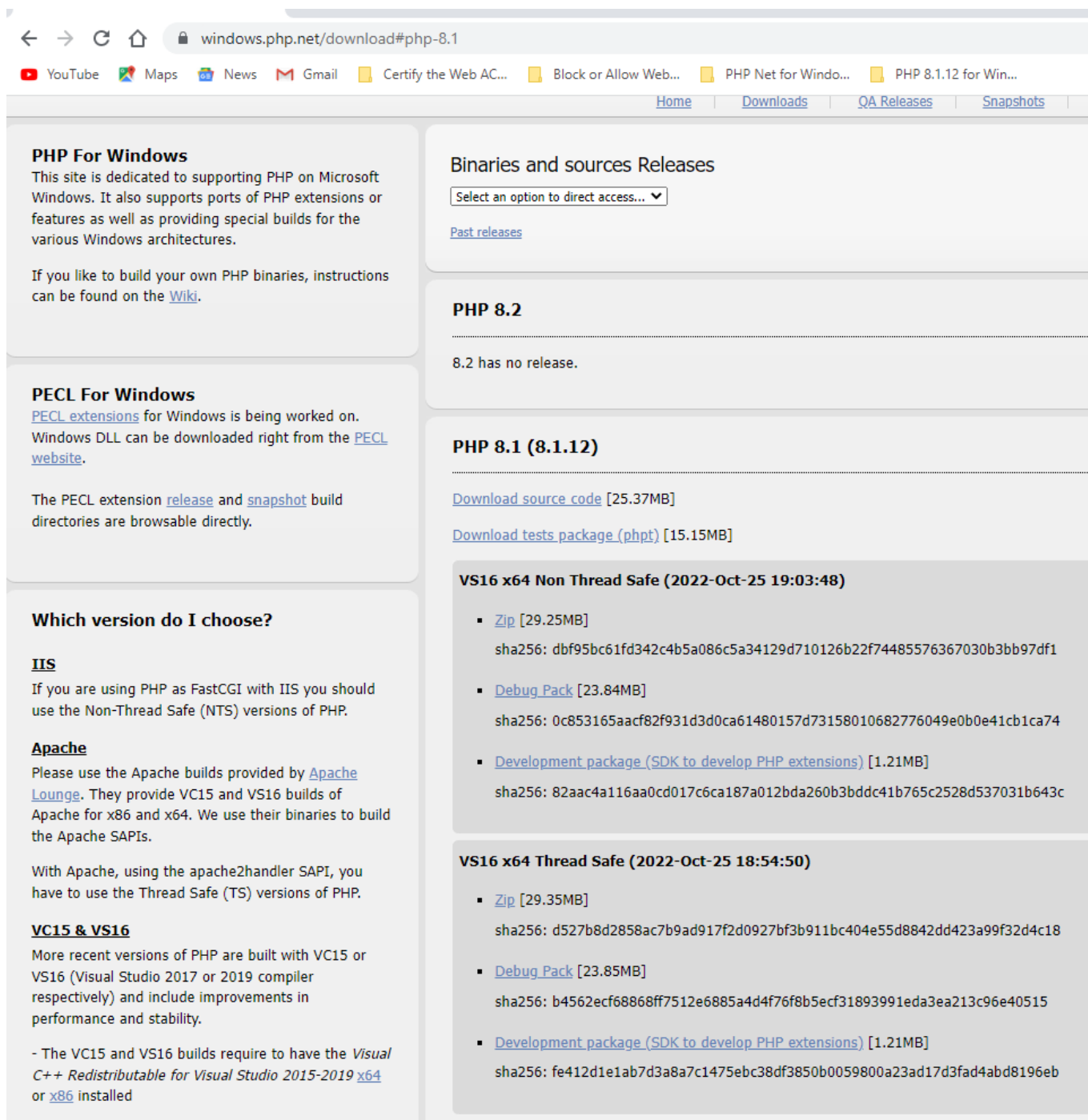
Unblock the Zip File (Properties - Clear Check Box - "This file came from another computer and is blocked . . . etc" Click OK.

Unzip the Zip File to php_8_1

Using Windows file explorer, copy and paste the "php_8_1" directory (including its contained files and subdirectories) to your new and separate PHP path, such as c:\php_8_1

Using Notepad++ or similar advanced text editor, in the root of the php_8_1 directory, find and open the file "php.ini-production" and save as a new file named "php.ini" without the quotes.

Here is a snapshot of the Windows PHP8 download page which also lists the other requirements such as the Visual C++ Redistributable that must be installed on the Windows server system.



PHP For Windows
This site is dedicated to supporting PHP on Microsoft Windows. It also supports ports of PHP extensions or features as well as providing special builds for the various Windows architectures.

If you like to build your own PHP binaries, instructions can be found on the [Wiki](#).

PECL For Windows
[PECL extensions](#) for Windows is being worked on. Windows DLL can be downloaded right from the [PECL website](#).

The PECL extension [release](#) and [snapshot](#) build directories are browsable directly.

Which version do I choose?

IIS
If you are using PHP as FastCGI with IIS you should use the Non-Thread Safe (NTS) versions of PHP.

Apache
Please use the Apache builds provided by [Apache Lounge](#). They provide VC15 and VS16 builds of Apache for x86 and x64. We use their binaries to build the Apache SAPIs.

With Apache, using the apache2handler SAPI, you have to use the Thread Safe (TS) versions of PHP.

VC15 & VS16
More recent versions of PHP are built with VC15 or VS16 (Visual Studio 2017 or 2019 compiler respectively) and include improvements in performance and stability.

- The VC15 and VS16 builds require to have the *Visual C++ Redistributable for Visual Studio 2015-2019 x64* or [x86](#) installed

Binaries and sources Releases
Select an option to direct access...
[Past releases](#)

PHP 8.2
8.2 has no release.

PHP 8.1 (8.1.12)
[Download source code](#) [25.37MB]
[Download tests package \(phpt\)](#) [15.15MB]

VS16 x64 Non Thread Safe (2022-Oct-25 19:03:48)

- [Zip](#) [29.25MB]
sha256: dbf95bc61fd342c4b5a086c5a34129d710126b22f74485576367030b3bb97df1
- [Debug Pack](#) [23.84MB]
sha256: 0c853165aacf82f931d3d0ca61480157d73158010682776049e0b0e41cb1ca74
- [Development package \(SDK to develop PHP extensions\)](#) [1.21MB]
sha256: 82aac4a116aa0cd017c6ca187a012bda260b3bddc41b765c2528d537031b643c

VS16 x64 Thread Safe (2022-Oct-25 18:54:50)

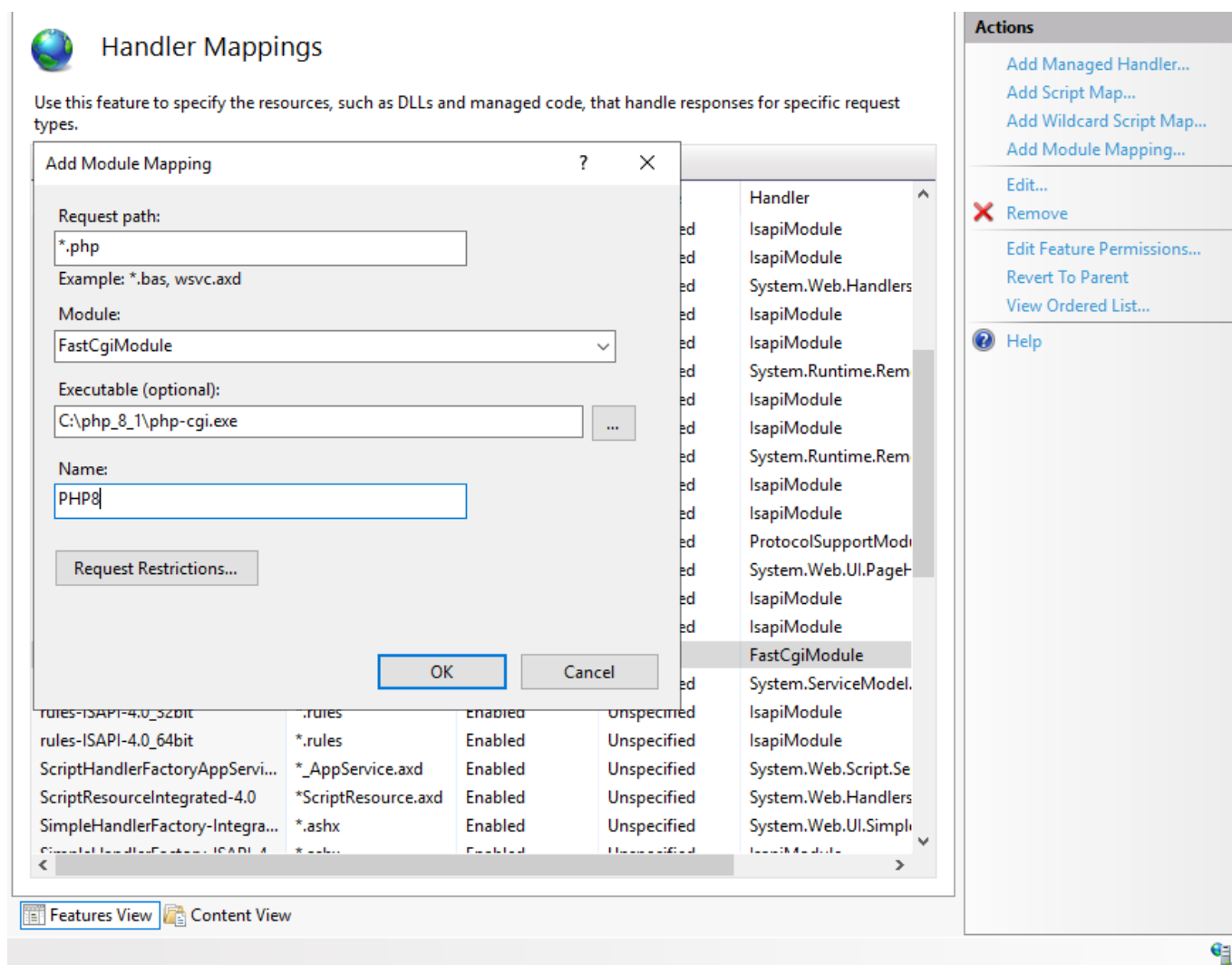
- [Zip](#) [29.35MB]
sha256: d527b8d2858ac7b9ad917f2d0927bf3b911bc404e55d8842dd423a99f32d4c18
- [Debug Pack](#) [23.85MB]
sha256: b4562ecf68868ff7512e6885a4d4f76f8b5ecf31893991eda3ea213c96e40515
- [Development package \(SDK to develop PHP extensions\)](#) [1.21MB]
sha256: fe412d1e1ab7d3a8a7c1475ebc38df3850b0059800a23ad17d3fad4abd8196eb

Make Sure that you have installed the Visual Studio C++ Redistributable 2015 - 2019 X64 (or 32 as applicable). In the Windows Search, type Control Panel, Opens Programs, and then on the left click Enable Windows Features.

Configure Handler Mappings for FastCGI Module in IIS Manager

1. Start IIS Manager by clicking on Start, Programs, Administrative Tools, and then Internet Information Services (IIS) Manager.
2. From the IIS Manager, click on the hostname of your server in the Connections panel on the left.
3. Double-click on the Handler Mappings icon. Insert a screen capture here depicting IIS and handler mappings
4. From the Handler Mappings Actions panel, click on Add Module Mapping.

5. Type the following information into the appropriate text boxes, and then click OK. Request path: *.php then Module : FastCGIModule then Executable: C:\php_8\php-cgi.exe then Name: FastCGI
6. Click OK, and then click Yes.



Configure the php.ini File

1. In the c:\php_8_1 folder, open the php.ini-production file using a good text editor like Notepad++ and then “save as” the contents of this file using the new file name “php.ini” and then close (x) both the php.ini-production file (tab) and the new php.ini file (tab) from within Notepad++.
2. Re-open the php.ini file using Notepad++ text editor and then un-comment and modify certain settings within php.ini as follows:
3. Set fastcgi.impersonate = 1 ;REMARK FastCGI under IIS supports the ability to impersonate security tokens of the calling client. This allows IIS to define the security context that the request runs under.
4. Set cgi.fix_pathinfo = 0 ;REMARK The cgi.fix_pathinfo provides PATH_INFO/PATH_TRANSLATED support for Common Gateway Interface (CGI). Setting this to 1 will cause PHP CGI to fix its paths to conform to the specification.
5. Set cgi.force_redirect = 0
6. Set open_basedir = a path pointing to a folder or network path where the content of the Web site(s) is located. (Such as c:\hostdata), or just leave it commented like this “;open_basedir =” without the quotes

7. Set extension_dir to point to a location where PHP extensions reside. This is typically extension_dir = "./ext" However, per remarks in the "php.ini-production" file in both PHP7 and PHP8 it says for "Windows" set it instead as follows: extension_dir = "ext"
8. Set error_log="C:\php_errors.log" ;REMARK This can help with troubleshooting. Alternatively, set **error_log = "c:\php\logs\errors_log"** and make a new sub-folder in c:\php named "logs" and grant the sub-folder "logs" full control write access for both IUSR and IIS_USERS.
9. Enable the required PHP extension by un-commenting the appropriate lines within the extensions section of the php.ini file. See a further discussion of which extensions to enable.

From:
<https://installconfig.com/> - Install Config Wiki

Permanent link:
https://installconfig.com/doku.php?id=installing_php_8_1_12_windows_iis_10&rev=1667067262

Last update: **2022/10/29 18:14**

